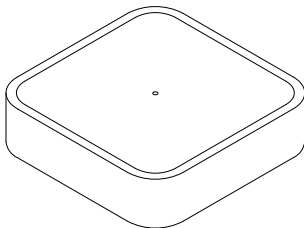




CM-55

Wi-Fi Matter Bridge

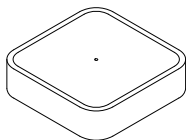


English

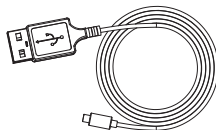
The Motionblinds Matter bridge is the heart of your automated blinds network at home. The bridge unlocks endless possibilities to operate blinds with the Motionblinds Matter app. Local connection with leading smart home applications enable voice control and a variety of smart automation options.

Max. blinds	Scenes	Timers	Frequency	Range radio	Power supply	Length	Width	Height
128	50	50	433 MHz 2.4 GHz	30m	5V DC max. 1,5A	90 mm	90 mm	23 mm

This box includes the following items:



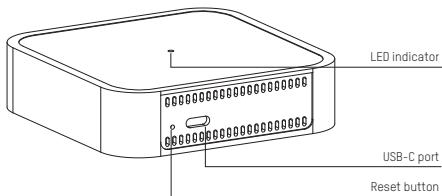
CM-55 Wi-Fi Matter Bridge



Powercable USB C



For the latest information and updated manuals, visit rtube.nl/cm-55



Color	Meaning LED-indicator
Blue	In setup mode (Bluetooth)
Orange	Connecting to network
Green	Connected to network

Reset modes:

To reset, press and hold the reset button and release it in one of the reset modes.

Release when LED is green: WLAN credentials are reset. [2 sec.]

Release when LED is red: Factory reset. [5 sec.]

Color	Meaning
Green	Wi-Fi credentials will be reset
Red	Reset to factory default

Safety

WARNING: Important safety instructions. Follow all instructions, since incorrect installation can lead to severe injury.

- Do not let children play with the blind and/or remote control.
- Take care that the blind can move freely and is not blocked by any objects.
- Do not paint the device.
- Keep the device dry.
- Do not drop, knock, or shake the device. Rough handling can break internal circuit boards.

Cleaning

Follow these general rules when cleaning the outside of the device and its components:

- Use a damp, soft, lint-free cloth. Avoid getting moisture in openings.
- Do not use aerosol sprays, solvents, alcohol, or abrasives.

Service & Support

Do not perform repairs yourself. Do not attempt to open the device or disassemble it. You run the risk of electric shock and voiding the limited warranty. No user-serviceable parts are inside.

Warranty Service

First follow the advice in this manual. If the product appears to be damaged or does not function properly, go to your local dealer for instructions on how to obtain warranty service.

Recycle

This marking indicates that this product should not be disposed with other household wastes throughout the EU. To prevent possible harm to the environment or human health from uncontrolled waste disposal, recycle it responsibly to promote the sustainable reuse of material resources. To return your used device, please use the return and collection systems or contact the retailer where the product was purchased. They can take this product for environmental safe recycling.

EU Declaration

Hereby, Coulisse declares that the radio equipment type CM-55 is in compliance with directive 2014/53/EU. The full text of the EU declaration of conformity is available at the following internet address: support.motionblinds.com.

- Frequency range: 433 MHz, RF power: 10 dBm EIRP.
- Frequency range: WiFi 2400-2483 MHz, RF power: <20dBm EIRP.

FCC Manual | FCC ID: ZY4CM55
Regulatory Information

1 FCC Information for User

This product does not contain any user-serviceable components and is to be used with approved antennas only. Any product changes or modifications will invalidate all applicable regulatory certifications and approvals.

2 FCC Electronic Emission Notices

This device complies with part 15 of the FCC Rules.

Operation is subject to the following two conditions:

1. This device may not cause harmful interference
2. This device must accept any interference received, including interference that may cause undesired operation.

3 FCC Radio Frequency Interference

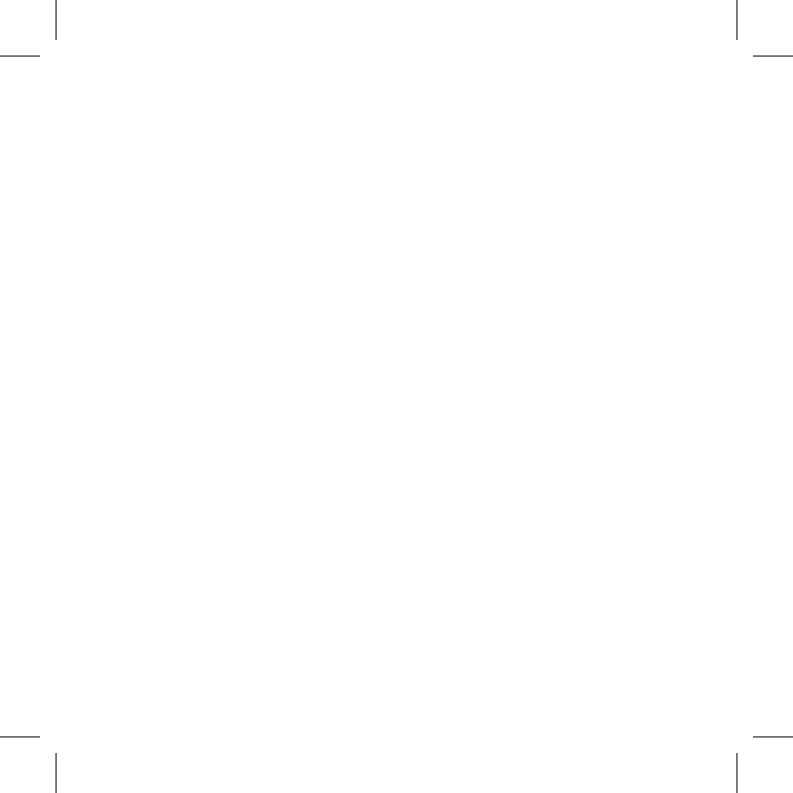
Statement

This equipment has been tested and found to comply with the limits for a class B digital device, pursuant to Part 15 of the FCC Rules. These limits are designed to provide reasonable protection against harmful interference when the equipment is operated in a commercial environment. This equipment generates, uses and can radiate radio-frequency energy and, if not installed and used in accordance with the instructions, may cause harmful interference to radio communications.

Operation of this equipment in a residential area may cause harmful interference, in which case the user will be required to correct the interference at their own expense.

If this equipment does cause harmful interference to radio or television reception, which can be determined by turning the equipment off and on, the user is encouraged to try to correct the interference by one or more of the following measures:

- Reorient or relocate the receiving antenna
- Increase the distance separating the equipment and receiver
- Connect the equipment to an outlet on a circuit different from that to which the receiver is connected
- Consult the dealer or an experienced radio/TV technician for help



1 Download the app

- i** Download the Motionblinds Matter app from the App Store or Google Play with your smartphone or tablet.



App Store
Download the
Motionblinds
Matter app
rtube.nl/red2059



Google Play
Download the
Motionblinds
Matter app
rtube.nl/red2060

2 Connect the bridge to a Wi-Fi network

i An active internet connection is required to add the Motionblinds Matter bridge to your home Wi-Fi network.

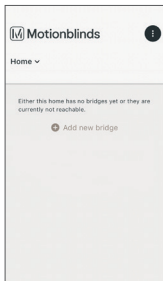
Choose a location for the Motionblinds Matter bridge in your home. Connect your smartphone or tablet to your home Wi-Fi network to check the strength of the Wi-Fi signal at this location.

To avoid interference please make sure the Motionblinds Matter bridge is located at least one meter away from any other Wi-Fi devices, including your router.

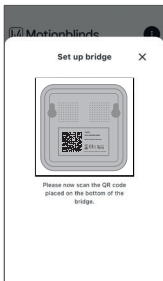
Note: This item only works on a 2,4GHz Wi-Fi network, not on a 5GHz Wi-Fi network. Please consult the manual of your router for settings.



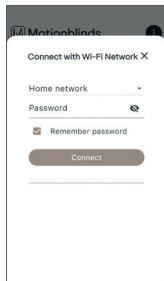
3G/4G	✗
	✗
	✗
	✓
	✓



- 2.1 Click on 'Add new bridge' to add your bridge to your app. Make sure the bridge is in setup mode.(Blue LED)



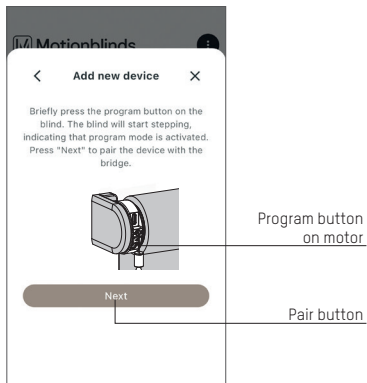
- 2.2 Scan the QR code on the bottom of your bridge and follow the installation wizard to setup your bridge.



- 2.3 Select the network you want the bridge to connect with. Make sure to enter the right Wi-Fi credentials.

2. CONNECT THE BRIDGE TO A WI-FI NETWORK

3 Add a blind



i Before adding a blind to the Motionblinds Matter bridge, the end positions of the blind must be programmed.

3.1

Shortly press the program button on the blind. (Please see the manual of your motor to see where the program button is located.) The blind will start stepping, indicating that program mode is activated. Press the 'Next' button to connect the blind with your bridge.

4 Frequently Asked Questions

Problem	Cause	Solution
Blind is not responding	Motor battery is empty	Charge the motor. See the manual of your motor
	Radio interference / shielding	Make sure that the bridge/antenna of the motor is out of the way from metal objects
	The distance from the bridge to the motor is too far	Move the bridge closer to the blind
	The bridge is turned off	Power the bridge
Can not pair your bridge	Wrong password	Start the setup wizard again and use the right password. The password is case sensitive. Enter setup mode again by holding the reset button for 2 seconds.
	Router does not give an IP address to the bridge	Press and hold the reset button for 5 seconds. Release when the LED emits a red light to factory reset the bridge.
	Bridge is trying to connect with 5GHz .	Please consult the manual of your router to temporarily turn off your 5GHz in the router settings.